

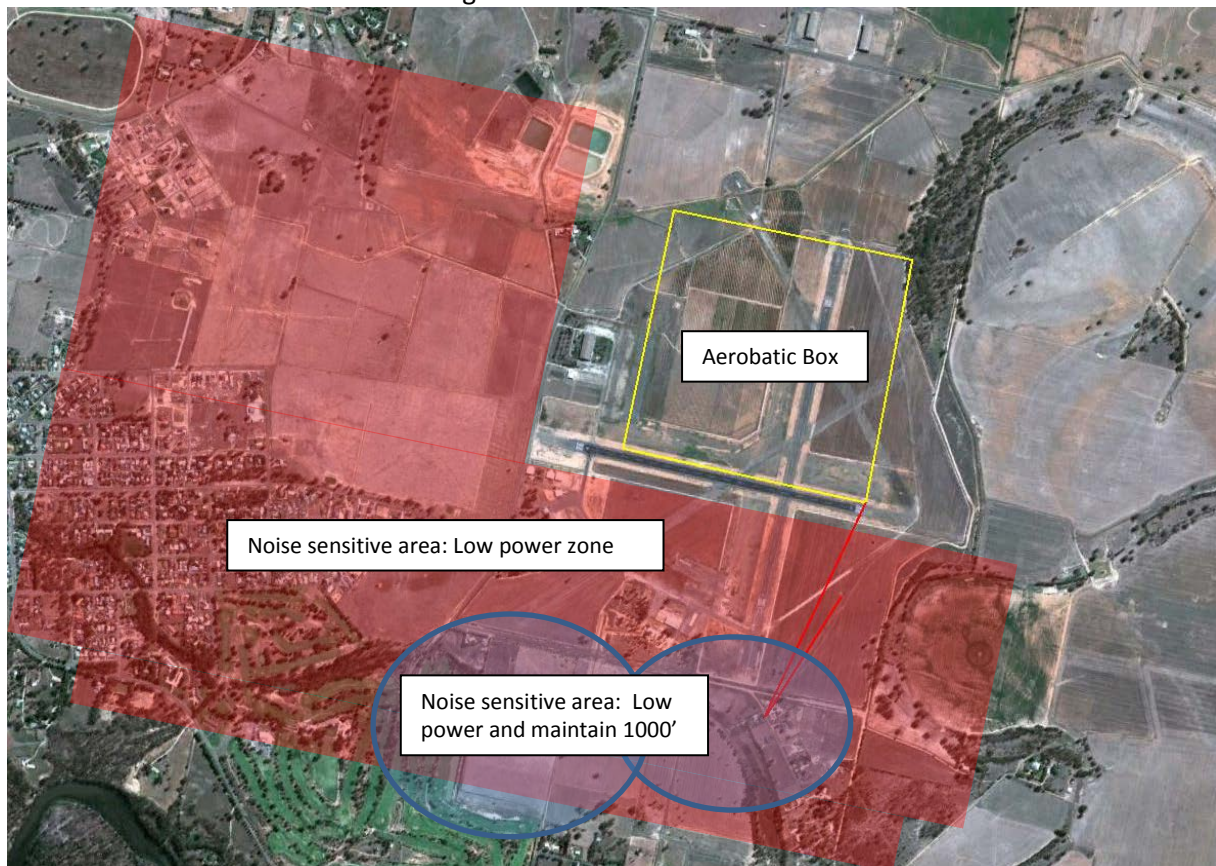
## AUSTRALIAN AEROBATIC CLUB

### Fly Neighbourly Policy

### TOCUM WAL AERODROME

### Draft Appendix A

Tocumwal Aerodrome and surrounding area Dec 2011 see notes below



#### Tocumwal Fly Neighbourly notes

- Notes
- 1: Yellow square marks new Aerobatic Box location (360m north) of previous location
  - 2: Long red line marks 960m from southern edge of box to nearest residence
  - 3: Short red line marks maximum southern extent of zone penetration (640m)
  - 4: Red fill area (south and west of rwy 09/27) is **NOISE SENSITIVE AREA** – low power zone
  - 5: Blue circles indicate low power and 1000' AGL preferred
  - 6: conduct circuits in accordance with ERSA and maintain 1000' AGL until landing assured
  - 7: on take off from 18 use most northerly release point – reduce power and RPM ASAP - maintain straight out climb to circuit height and crosswind turn at 1 mile or further south
  - 8: Consider flying east/west direction when wind northerly component exceeds 20knots to reduce sound carrying towards noise sensitive areas to the south